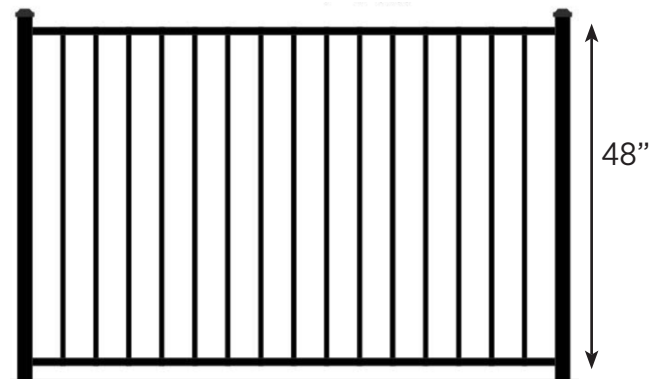
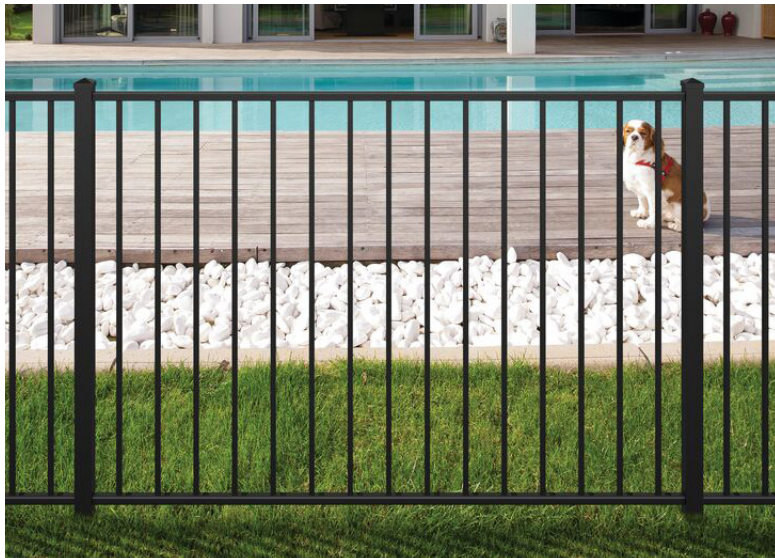


IN STOCK ALUMINUM FENCES + GATES



48" Ascot 2 Channel

Flush Bottom - In Black



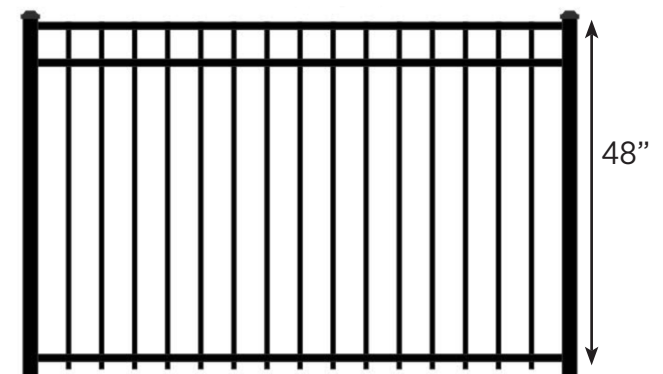
Available Gates

Straight Top - 48" & 60" wide

Arched Top - 48" & 60" wide

48" Ascot 3 Channel

Standard Bottom - In Black

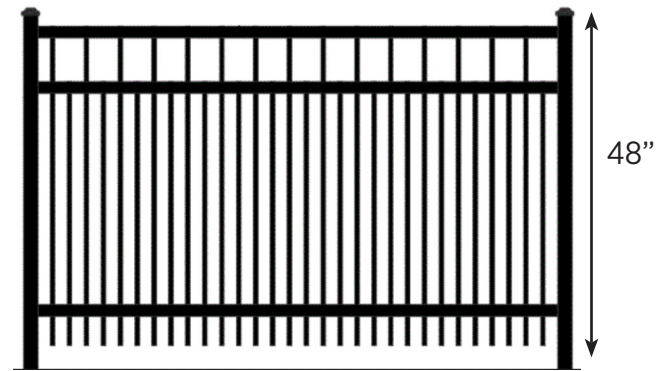


Available Gates

Straight Top - 48", 60" & 72" wide

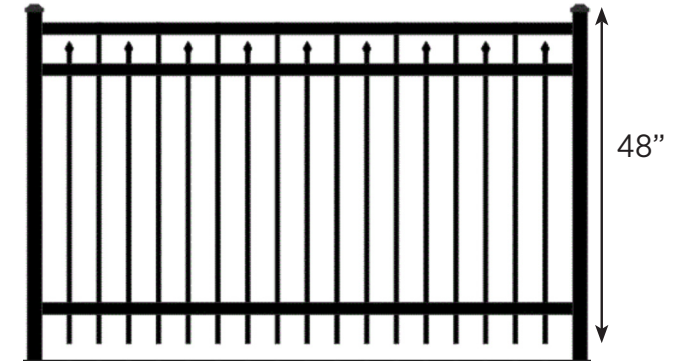
Arched Top - 48", 60" & 72" wide

48" Ascot 3 Channel - Royale
Standard Bottom - In Black



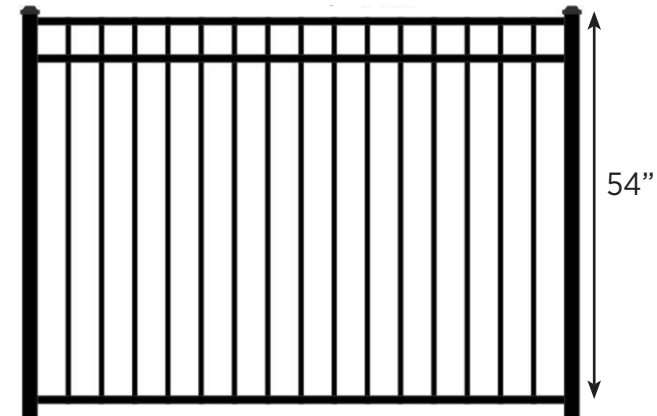
Available Gates
Straight Top - 48" & 60" wide
Arched Top - 48" & 60" wide

48" Canterbury 3 Channel
Standard Bottom - In Black



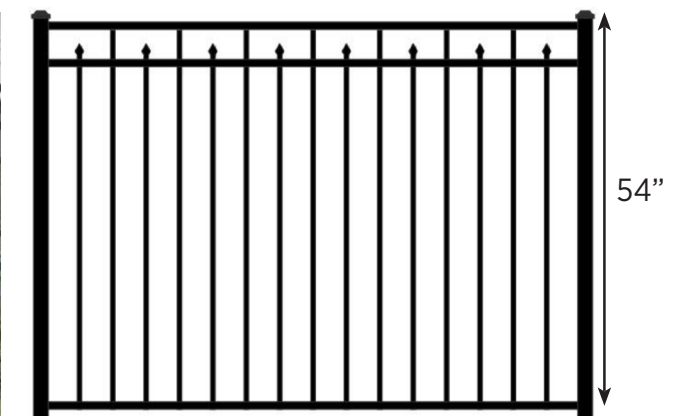
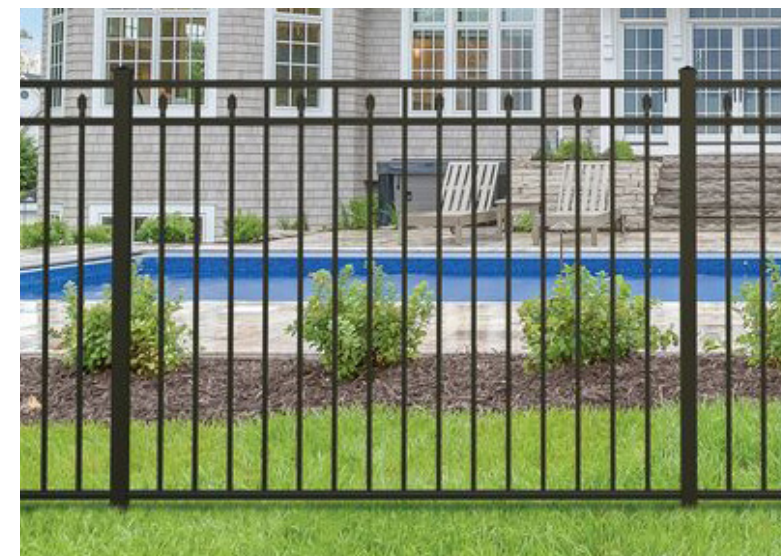
Available Gates
Straight Top - 48", 60" & 72" wide
Arched Top - 48", 60" & 72" wide

54" Ascot 3 Channel
Flush Bottom - In Black



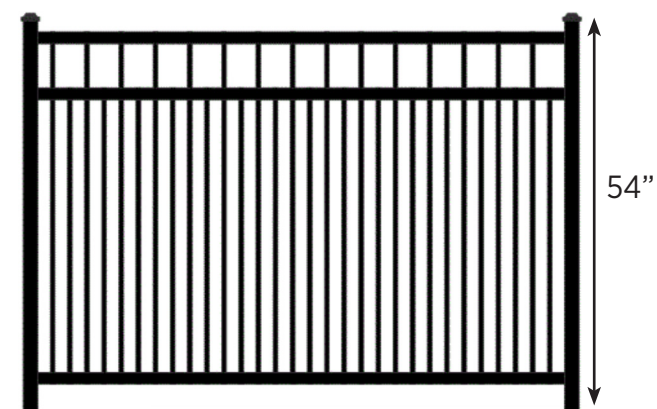
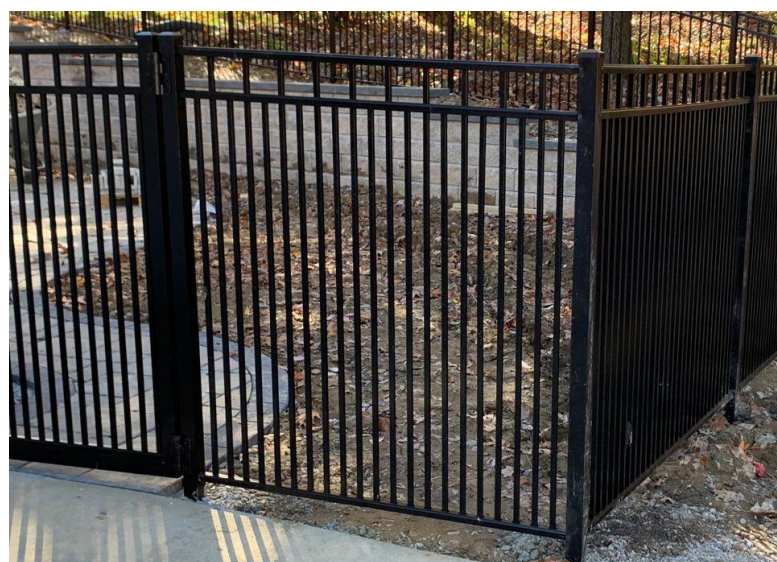
Available Gates
Straight Top - 36", 48", 60" & 72" wide
Arched Top - 48", 60" & 72" wide

54" Canterbury 3 Channel
Flush Bottom - In Black



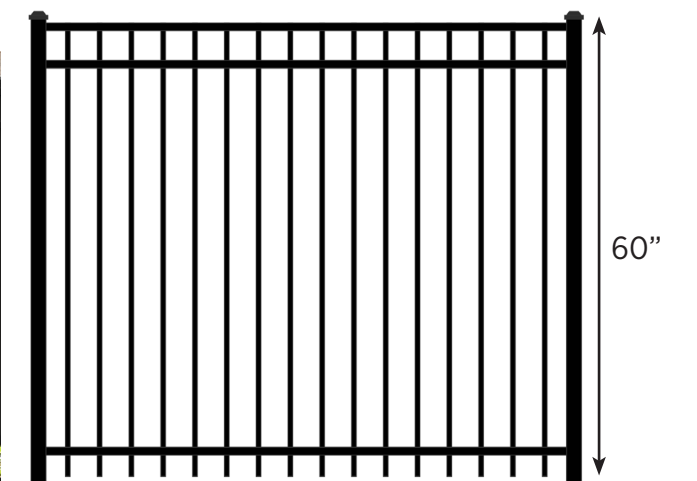
Available Gates
Straight Top - 48", 60" & 72" wide
Arched Top - 48", 60" & 72" wide

54" Ascot 3 Channel - Royale
Flush Bottom - In Black



Available Gates
Straight Top - 48", 60" & 72" wide
Arched Top - 48", 60" & 72" wide

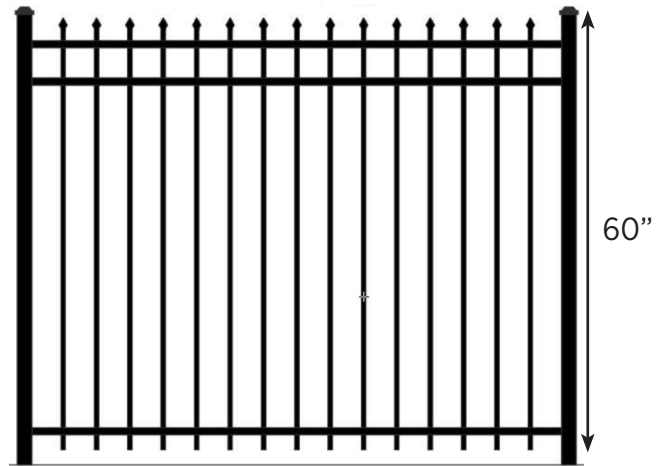
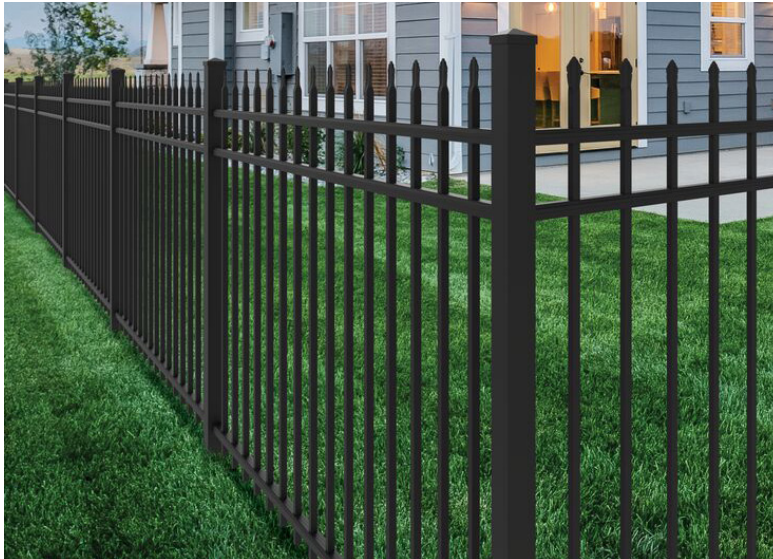
60" Ascot 3 Channel
Standard Bottom - In Black



Available Gates
Straight Top - 48" & 60" wide
Arched Top - 48" & 60" wide

60" Belmont 3 Channel

Standard Bottom - In Black



Available Gates

Straight Top - 48" & 60" wide

Arched Top - 48" & 60" wide

ACCESSORY Options



Trident Latch



Armor Latch



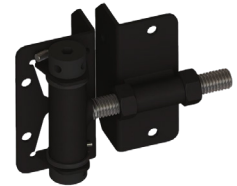
Standard Gravity Latch



Drop Rod



Self-Closing Aluminum Hinge



Self-Closing Adjustable Hinge



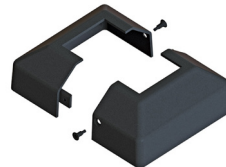
Straight Wall Mount Rail Bracket



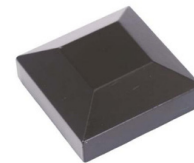
Swivel Wall Mount Rail Bracket



Floor Mount Post Bracket



Floor Mount Bracket Cover



Standard Cap



Ball Cap

INDIVIDUAL SECTION WIDTH

All sections are 72" wide

LONG-LASTING FINISH

Powder coat finish meets or exceeds the AAMA 2604 specifications.



717-502-0942 RandSFence.com

MANUFACTURER

Supplier of materials may vary at R&S's discretion.

